

Student Health in Strasbourg

Presentation for international students



Dr Caroline SAUTON, 22.01.2025

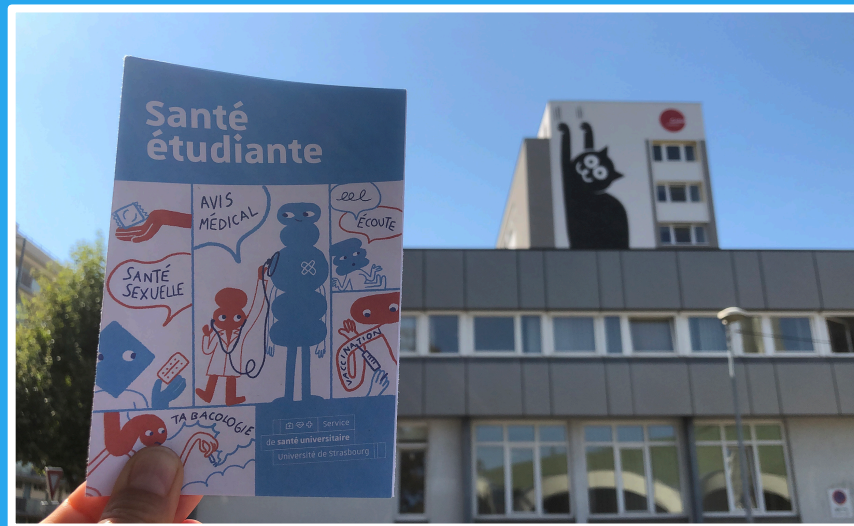
Summary

Part 1 | University Health Service

Part 2 | What you need to know about the French health care system

Part 1

University Health Service



Who? Where? When? How? How much?



Students of the University of Strasbourg & associated institutions (Hear, Engees, Ensas, Insa)



2 places:

→ **SSE Esplanade:** 6 rue de Palerme, Strasbourg


Monday-Friday: 8:30 am-5:00 pm

→ **SSE Illkirch:** 72 route du Rhin, Illkirch

Monday-Thursday: 8:30 am- 5:30 pm



Phone number: **0033 3 68 85 50 24**

or using the app 



Free: 0 €!

What for?

- ◆ **Preventive consultations for non-European students** and health- students (tuberculosis test, update of vaccinations...)
> OFII consultation when you arrive in France
- ◆ **General practice consultations**
- ◆ **Gynecology consultations**
- ◆ Study accommodations



Photo Catherine Schroder / Unistra

What for?

- ◆ Nutrition consultations
- ◆ Screening for Sexually Transmitted Infections
- ◆ Individual stress management consultations
- ◆ ...



What else?



- ◆ *“Take care!”* actions in university residences:
 - cité U' Alfred Weiss Feb. 8th
 - Cité U' Robertsau Feb. 21st
- ◆ Film debate evening, cinéma Vox: *Drunk*, Jan. 30th, 7.45 p.m. (addictions)
- ◆ Preventive actions, for exemple : tests for STIs, Feb. 4st
- ◆ Cooking Workshop...



Étudiants relais RESCUE | *Students mediators*

- ◆ 11 students from the University of Strasbourg can help the others students (university issues, family problems, social or relationship difficulties, psychological aid, stress, guidance with course selection)
- ◆ Contact by email. Free. Confidential.
- ◆ They speak different languages
- ◆ More info on the website sante.unistra.fr



CAMUS | Medical and psychological health center

- ◆ Psychologists & psychiatrists
- ◆ 3 places:
 - **Esplanade**: 6 rue de Palerme, Strasbourg
 - **Petite France**: 11 rue Humann, Strasbourg
 - **Illkirch**: 72 Route du Rhin, Illkirch
- ◆ Free! 0€
- ◆ Appointments on administration office:
 - **on site** (6 rue de Palerme, Strasbourg)
 - **by email**: camus@unistra.fr



Part 2

What you need to know about the French health care system



Interesting links

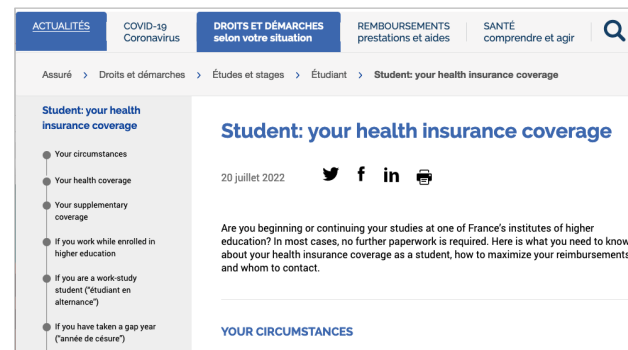
Social Security registration for foreign students



<https://etudiant-etranger.ameli.fr>



Student: your health insurance coverage



<https://www.ameli.fr/assure/droits-demarches/etudes-stages/etudiant/student-your-medical-expenditure-coverage>



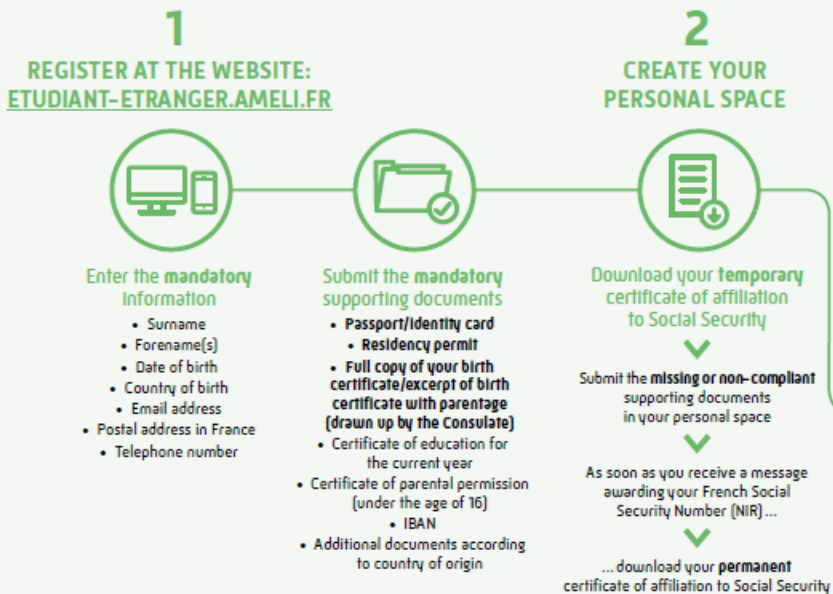
(Code postal: 67000)

How can you get French health insurance?



MEMO FOR INTERNATIONAL STUDENTS

On your arrival in France, and after registering at your higher education institution, follow these steps to obtain coverage of your health costs throughout the duration of your studies:



THE ETUDIANT-ETRANGER.AMELI.FR WEBSITE

To obtain Health Insurance, every new international student must register on the website provided: etudiant-etranger.ameli.fr

This dedicated website – available in French, English and Spanish – and accessible in Mandarin and Arabic through assistance, is a private space between foreign students and the Health Insurance.

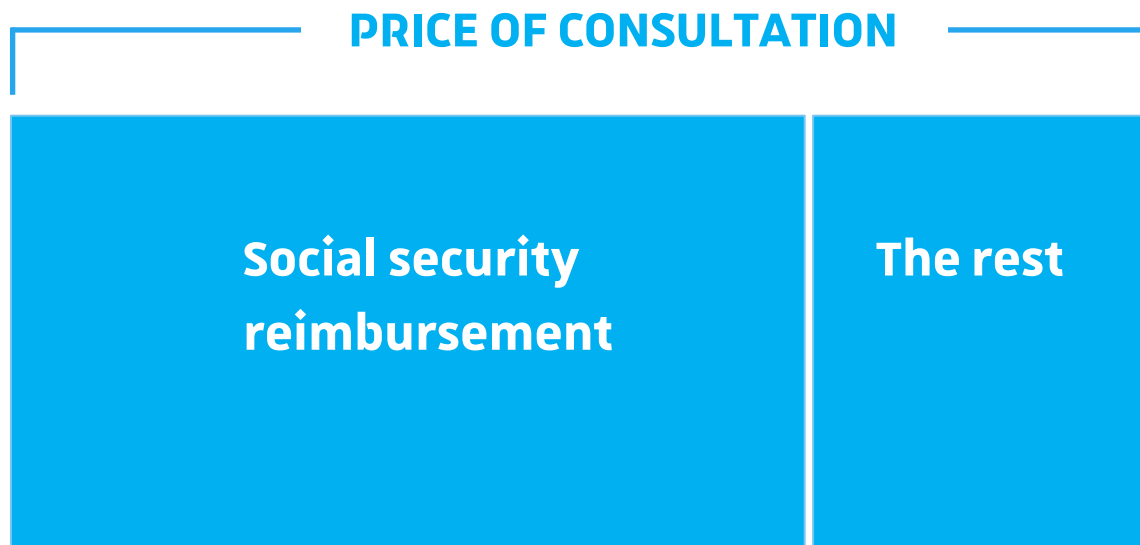
NEED HELP?
Consult the tutorial at etudiant-etranger.ameli.fr, section [Need help](#)



You belong to the Health Insurance fund of the place where you are living. THIS PROCEDURE ONLY NEEDS TO BE FOLLOWED ONCE, ON YOUR ARRIVAL.

Price(s) and Reimbursements

« Conventionné **secteur 1** » = No extra fees (GP's frequently)



Price(s) and Reimbursements

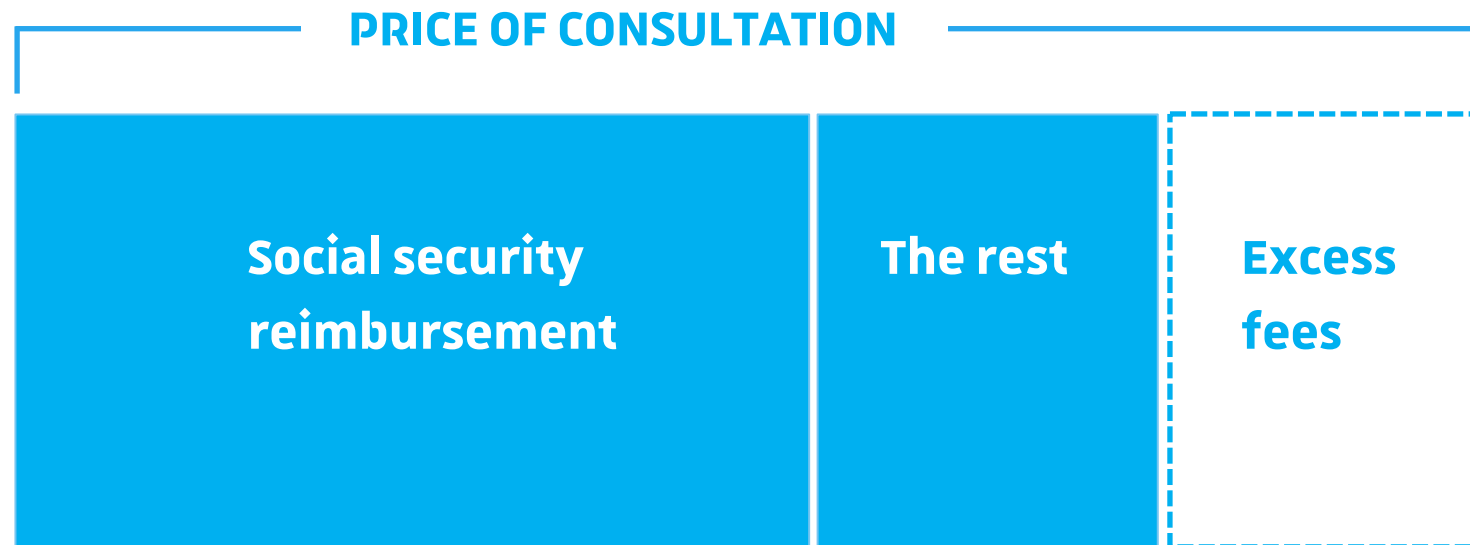
Example: Price of a LIBERAL basic general practice consultation: 30 €



paper care sheet / Carte vitale
(tiers payant)

- ♦ At your expense
 - ♦ Complémentaire santé (private insurance)
- Take an appointment with a Social worker in our department or in the CROUS department)

« Conventionné **secteur 2** » = Excess fees (specialist)



 Ask for the price when making the appointment

The essential to know

- ◆ « Tiers payant » with « **Carte vitale** »
- ◆ To be reimbursed correctly, you must have an attending physician (« **médecin traitant** »): go and see a GP when you have your permanent French Social Security Number!
- ◆ **First:** « Médecin traitant »
Then: Specialist (except for gynecologist, ophthalmologist, pediatrician)



Conclusion

- ◆ If you need consultation, you can use



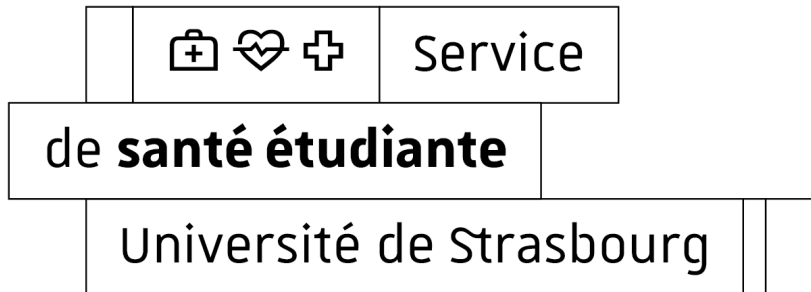
or phone: **0033 3 68 85 50 24**

- ◆ The other choice is the private practitioner.
- ◆ Register you at etudiant-etranger.ameli.fr and follow the instructions

Thank you for your attention 😊

Contact

Dr Caroline SAUTON



 **sante.unistra.fr**

 **Ernest**

 **sante.etudiants@unistra.fr**

 **@sante.unistra**